

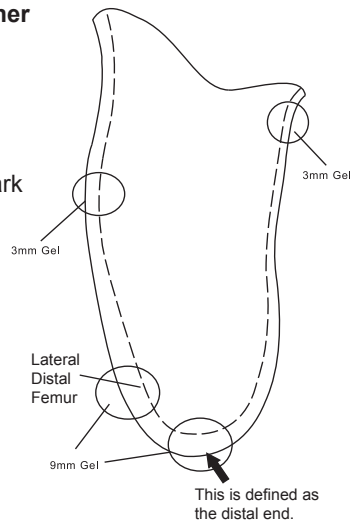
# Alpha DESIGN® AK Liner Order Form: Important Casting & Marking Guidelines

This form will allow you to order an Alpha DESIGN Liner with custom gel modifications for either a Transfemoral or for a Knee Disarticulation patient. Below are diagrams that explain what the custom gel profile of each type will be.

For greater control over the gel design ask Ohio Willow Wood about the OMEGA® Scanner and the Alpha DESIGN Liner wizard.

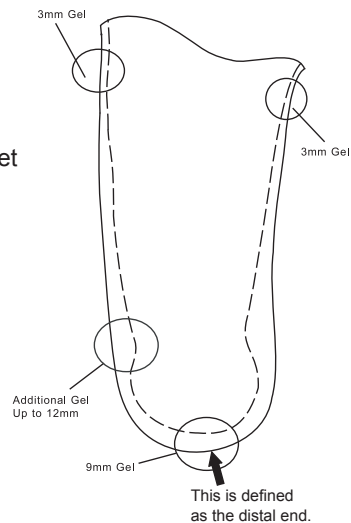
## For a Transfemoral Alpha DESIGN Liner from a cast, the gel profile will be:

- \*3 mm base gel thickness
- \*9 mm distal gel thickness over distal end of limb
- \*9 mm gel at lateral distal femur landmark
- \*3 mm of gel proximally above the socket
- \*3 mm of gel at the medial wall



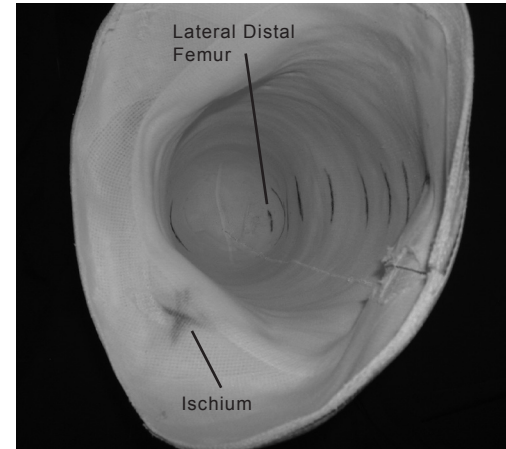
## For a Knee Disarticulation AK Alpha DESIGN Liner from a cast, the gel profile will be:

- \*3 mm base gel thickness
- \*3 mm of gel proximally above the socket
- \*3 mm of gel at the medial wall
- \*9 mm of gel distally
- \*Up to 12 mm of gel to fill necking area above the femoral condyles. *This area will be filled to create a more cylindrical shaped liner.*

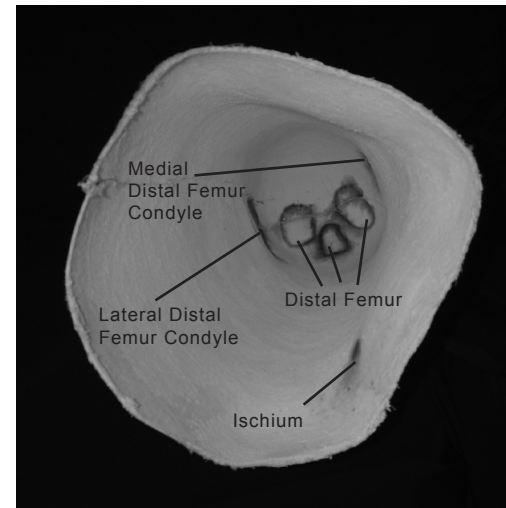


## Proximal Views of Casts for Marking Reference

See the examples for the marks that must be indicated on the cast. Missing marks may result in no additional gel at the location and may delay the order.



Standard AK cast



Knee Disarticulation cast

## Please Note:

- For bilateral amputees, please use separate forms for each residual limb for best socket/liner accuracy.
- Please make sure to include the patient ID on the cast.